



WATER BASED SYSTEM
CLEANERS – SEALERS – RELEASE AGENTS

**THE GREEN SOLUTION FOR COMPOSITES
A FULL SAFE RANGE**





OUR EXPERIENCE

WE INVITE YOU TO SHARE OUR POSITIVE EXPERIENCE

Dear Customers,

We have been developing and supporting our customers to use water based release agents for more than 15 years.

At the beginning, it was not so easy to replace the solvent based especially due to mentality and to lower efficiency. Our investigations, improvement, commitment and tenacity have paid.

At the end, our experiences and success, step by step, drove us to be able to supply today a complete performant water based system which includes, release agents, cleaners and sealers.

Finally, by working hard, all together, we all won. We are all proud and all happy with that, our customers first.

ENVIRONMENTAL ORIENTATION



OUR ENVIRONMENTAL ORIENTATION

Dear Customers,

Since more than 15 years, ADDITEK feels concerned by environmental rules, staff and customers health care.

Therefore, we manage to:

- Measure and control waste production.
- Improve our process to limit production of waste.
- Ensure waste destruction cycle traceability.
- Improve our process to decrease energy consumption.
- Strongly focus in formulating our water based products in total compliance with REACH regulation and health care for final users.

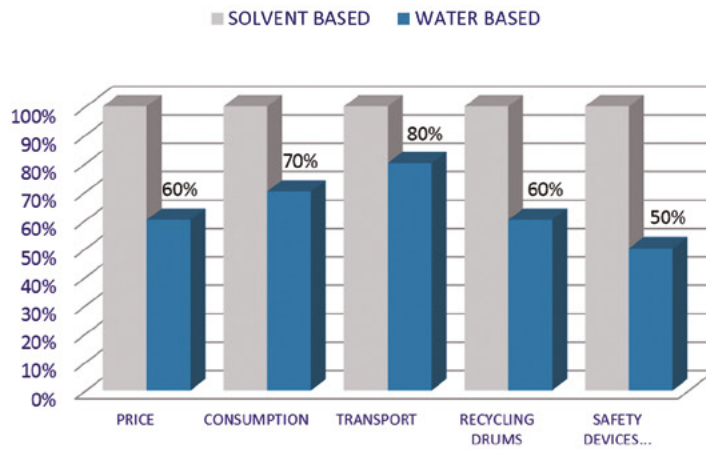
P. MAHIEU
Managing Director



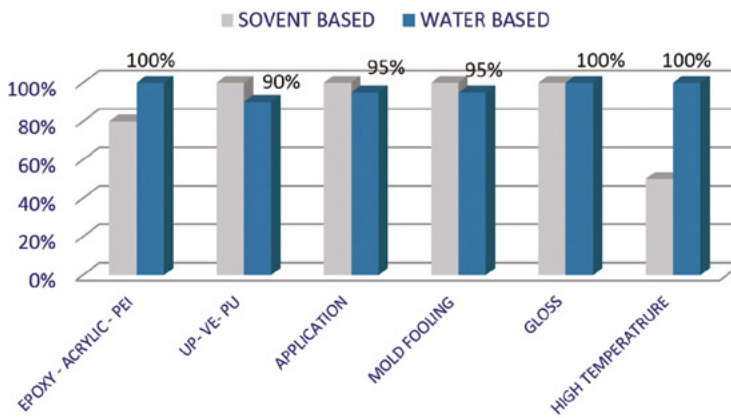


WATER OR V.O.C BASED?


COST COMPARISON





PERFORMANCES



CLEANERS – SEALERS – RELEASE AGENTS

CLEANERS	VOC	PICTOGRAM	RISK
MOULNET 888W Water based surface degreaser	0%	No pictogram	--
SOLVENT BASED DEGREASER	100%		H225, H315, H318, H319, H361, H336, H373

SEALERS	VOC	PICTOGRAM	RISK
BOUCHEX WBS / WBS-P3 Sealer for micro-porosities	<0.3%	No pictogram	--
BASIC SOLVENT SEALER	97%		H225, H315, H319, H336, H373, H304, H411

RELEASE AGENTS	VOC	PICTOGRAM	RISK
MOULEX®WD401X Water based release agents	<0.3%	No pictogram	--
SOLVENT BASED RELEASE AGENT	96%		H225, H315, H319, H336, H304, H411

REACH

Dear Customers,

One of the aim of REACH is to ensure a high level of protection of human health and the environment from the risks that can be posed by chemicals.
These chemicals could be under authorization or interdiction.
First step is to create a list (SVHC list) of those chemical substances.

We hereby certify that all our products do not contain any of the SVHC listed substances.
All the substances in the recipes are registered or exempted.



Mr. Jacques DELFORGE
Quality Manager of ADDITEK SAS

ISO 9001



CERTIFICATE

Management system as per
EN ISO 9001 : 2008

In accordance with TÜV NORD CERT procedures, it is hereby certified that

ADDITEK S.A.S.
ZI Route de Thennes
80110 MOREUIL
France



applies a management system in line with the above standard for the following scope

Design, production, sales and trade of mould release agents and processing aids used in the rubber, thermoplastics, composites, wood and paper impregnation industries

Certificate Registration No. 04 100 051274
Audit Report No. 3516 0991

Valid until 2018-08-02
Initial certification 2012

Kaas
Certification Body
at TÜV NORD CERT GmbH

Essen, 2015-08-05

This certification was conducted in accordance with the TÜV NORD CERT auditing and certification procedures and is subject to regular surveillance audits.

TÜV NORD CERT GmbH

Langemarckstraße 20

45141 Essen

www.tuev-nord-cert.com





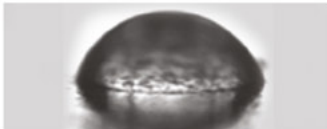
MOULNET 888W



MOLDS WATER BASED CLEANER

- Formulated with specific strong surfactants to provide a good degreasing effect on the mold surface, to improve application and performance of sealers and release agents.
 - Very suitable to remove dirt build up like resin monomers residue, calamine, release agents, waxes etc...
- Good cleaning effect result on high surface tension of the mold and a better release agent coating

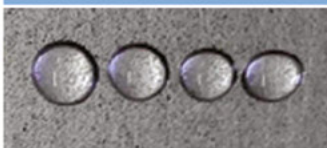
BEFORE CLEANING



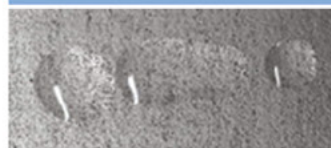
AFTER CLEANING



BAD WETTABILITY



GOOD WETTABILITY



SPECIFICATION DATA

MOULNET	COLOR	PH	DRY CON TAINS	FORM	DENSITY
888W	colourless	1.23	4.49%	Liquid	1.01

*After delivery, use and storage of our products not being under our control, we decline any express or implicit responsibility as to their behaviour.





MOULNET 888W

GENERAL RECOMMENDATIONS FOR USE

1. To apply generously with a cloth or a brush.
2. To wipe off
3. To repeat steps 1 and 2 until getting a degreased, dried and clean surface.

Test should be done before production using
 For technical support, or full specific recommendation please
 contact us: contact@additek.net

Consumption:	Applying with a cloth	Applying with a spray gun
	100g/m ²	15g/m ²
Packaging :	5kg, 25kg, 220kg, 1000kg drums	

SAFETY RECOMMENDATIONS - PROTECTION

Precautions for safe handling and storage

Avoid contact with skin and eyes, inhalation of vapors and mists. Do not eat or drink while working. Keep away from food, drink and feed. Instructions as regards storage premises: Adequately ventilated premises.

Exposure controls/personal protection

Eye protection: eye glasses with side protection. Protection for hands: PVA (polyvinyl alcohol).



If the product is sprayed, the use of a respiratory protection is recommended: filtering half-face mask (DIN EN 149).

For more details see safety data sheet or contact us: contact@additek.net



BOUCHEX WBS / - P3

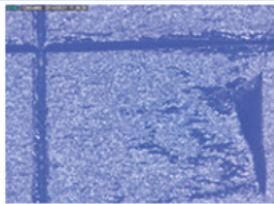


BOUCHEX WBS & WBS P3 WATER BASED SEALER

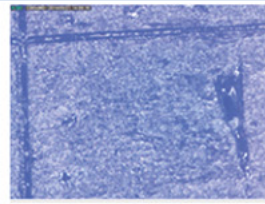
- Formulated with specific very low viscosity resin to penetrate into the micro-porosities of the mold surface.
- Easy to apply.
- Two grades: standard WBS or WBS P3 for more porous surface.
- Very suitable to reduce strongly mold fooling due to penetration and adherence of resins monomers into the micro-porosities.
- Very suitable to improve the water based release agents coating. BOUCHEX and MOULEX® water based release agents have excellent affinity. The surface tensions of both products are similar. That's the reason why the BOUCHEX is also good primer to enhance coating and performance of MOULEX® water based release agents.

MOLD SURFACE – ZOOM X200

WITHOUT BOUCHEX

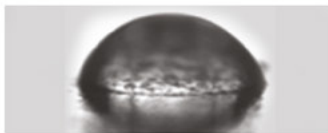


WITH BOUCHEX



BOUCHEX AS A PRIMER FOR MOULEX®

MOULEX® WD401 wettability on a mold surface WITHOUT BOUCHEX



MOULEX® WD401 wettability on a mold surface WITH BOUCHEX



SPECIFICATION DATA*

BOUCHEX	COLOR	FORM	DRY CON TAINS	PH	DENSITY
WBS	WHITE	LIQUID	2.7 - 3.7%	Liquid	0.98-1.00
WBS-P3	WHITE	LIQUID	3.00-4.00%	Liquid	0.98-1.00

*After delivery, use and storage of our products not being under our control, we decline any express or implicit responsibility as to their behaviour.



BOUCHEX WBS / - P3



GENERAL RECOMEMNDATIONS FOR USE

This product is used only for new molds or after strong cleaning or maintenance.

- 1.To apply two layers with a cloth, a brush or a specific spray gun.
- 2.To wipe off with clean cotton cloth and wait 2 minutes between each layer .
- 3.To polish with an antistatic, clean and soft cotton cloth.

To wait one night at room temperature before applying release agent.

Test should be done before production using
For technical support, or full specific recommendation please contact us:
contact@additek.net

Consumption :	Applying with a cloth	Applying with a spray gun
	100g/m ²	15g/m ²
Packaging :	5kg drums	

SAFETY RECOMMENDATIONS - PROTECTION

Precautions for safe handling and storage

Avoid contact with skin and eyes, inhalation of vapors and mists. Do not eat or drink while working. Keep away from food, drink and feed. Instructions as regards storage premises: Adequately ventilated premises.

Exposure controls/personal protection

Eye protection: eye glasses with side protection. Protection for hands: PVA (polyvinyl alcohol).



If the product is sprayed, the use of a respiratory protection is recommended: filtering half-face mask (DIN EN 149).

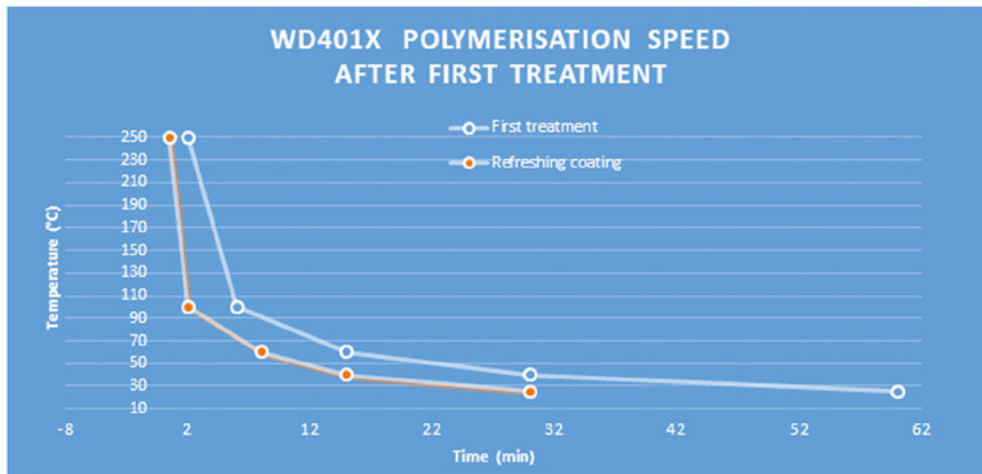
For more details see safety data sheet or contact us: contact@additek.net



MOULEX® WD401X

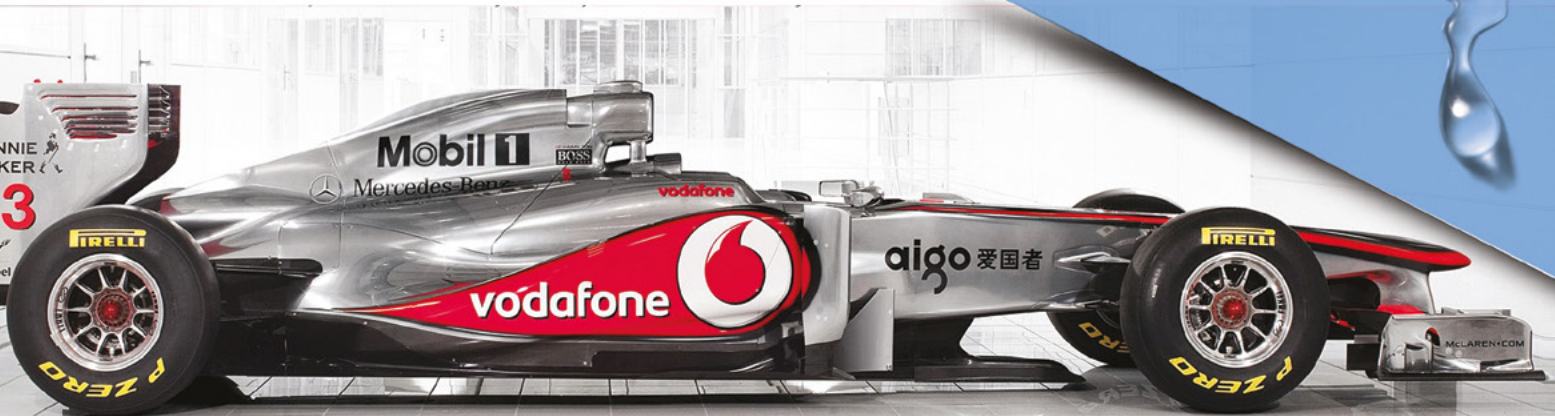
- Formulated to release all kind of resins, glues and plastics.
- Easy to apply
- Various grades adjusted to your needs: semi-permanent, high slip, high gloss, corrosion inhibitor, quick application before molding etc....
- Compatible with all kind of molds.

SELECTION GUIDE						
MOULEX®	WD401	WD401GB	WD401NP	WD401AC	WD401C	WD401R
Semi-permanent	++++	++	NO	++++	++++	++++
Slip	+	+++	++++	+	+	+++
Gloss	+	++++	+++	+	+	+
Corrosion inhibitor	+	+	+	+++	+	+
Temperature resistance	Max 450°C	Max 450°C	Max 450°C	Max 450°C	Max 450°C	Max 450°C
Fish eyes	No	slight	No	No	No	sometime
Auto-release	No	sometime	No	No	No	sometime



SPECIFICATION DATA					
MOULEX®	COLOR	FORM	DRY CONTAINS	PH	DENSITY
WD401	WHITE	LIQUID	1.97 – 2.24 %	8.7 – 10.4	0.99 – 1.00
WD401-GB	WHITE	LIQUID	3.5 – 4.5 %	9.0 – 11.0	0.98 – 1.00
WD401-NP	WHITE	LIQUID	2.1 – 3.1 %	7.0 – 9.0	0.98 – 1.00
WD401-AC	WHITE	LIQUID	2.1 -3.1 %	7.0 – 9.0	0.98 – 1.00
WD401-C	RED	LIQUID	2.07 – 2.34%	8.7 – 10.4	0.98 – 1.00
WD401-R	WHITE	LIQUID	4.8 – 5.8 %	7.0 – 9.0	0.98 – 1.00

*After delivery, use and storage of our products not being under our control, we decline any express or implicit responsibility as to their behaviour.



MOULEX® WD401X

GENERAL RECOMMENDATIONS FOR USE

1. To apply 2-3 layers with a cloth, a brush or a specific spray gun.
2. To wipe off with clean cotton cloth and wait 2 minutes between each layer.
3. To polish with an antistatic, clean and soft cotton cloth.
4. To wait a minimum of 15 minutes before molding, or the time necessary, following the graphic.
5. To apply 1 or 2 layers when it is necessary.

If the mold surface is above 50°C when to apply, it is not necessary to wipe off or even to polish.

Test should be done before production using.

For technical support, or full specific recommendation please contact us: contact@additek.net

Consumption :	Applying with a cloth	Applying with a spray gun
	100g/m ²	15g/m ²
Packaging :	5kg, 25kg, 220kg, 1000kg drums	

SAFETY RECOMMENDATIONS - PROTECTION

Precautions for safe handling and storage

Avoid contact with skin and eyes, inhalation of vapors and mists. Do not eat or drink while working. Keep away from food, drink and feed. Instructions as regards storage premises: Adequately ventilated premises.

Exposure controls/personal protection

Eye protection: eye glasses with side protection. Protection for hands: PVA (polyvinyl alcohol).



If the product is sprayed, the use of a respiratory protection is recommended: filtering half-face mask (DIN EN 149).

For more details see safety data sheet or contact us : contact@additek.net



MOULEX® WB31 GEL

Release coating, Models & Edge wax

MOULEX® WB31Gel is a water based gel release agent. It is used for technical surfaces or for mould parts where the release is known as difficult. The product forms a hard film that resists to the chemical, mechanical attacks and to the resin exothermic pic.

Thanks to its gel unctuousness form, MOULEX® WB31Gel can also be used as a sealer for old moulds or strong porous models or even for the edge of the moulds, where abrasion and temperature are high and mould surface is often dirty, rough and porous. For extreme porous surface or models, it can be used in combination with MOULEX® PVA VERT film.

PROPERTIES

- Appearance: Gel
- Colour: Yellow to beige
- Density: 0.99 (Typical value)
- Viscosity: 3000 – 4500
- Dry contains: 11% - 13%
- pH: 8 – 9.5
- Flash point: >101 °c
- VOC contains: < 0.7%
- Frost stability: not resistant to frost
- Shelf life: Mini 1 year



MOULEX® WB31 GEL

Release coating, Models & Edge wax

GENERAL RECOMMENDATIONS FOR USE

- Before using check the safety data sheet.
- Clean the mould
- Degrease the mould with MOULNET 888W (water-based degreaser).
- Stir MOULEX® WB31Gel.
- Apply generously with a brush or a cloth, 3 layers.
- If necessary polish with a clean, soft and dry cotton cloth to obtain a shiny surface.
- For models and new moulds let dry one night before the first release.
- Apply 1 or 2 coats when the release becomes more difficult.

For models, MOULEX® PVA VERT can be used above last layer and after drying.

Packaging:	Bucket of 16L (15.8 kg) / Bucket of 30L (29.7 kg)
-------------------	---

SAFETY RECOMMENDATIONS - PROTECTION

Precautions for safe handling and storage

Avoid contact with skin and eyes, inhalation of vapours and mists. Do not eat or drink while working. Keep away from food, drink and feed. Instructions as regards storage premises: Adequately ventilated premises.

Exposure controls /personal protection

Eye protection: eye glasses with side protection. Protection for hands: NBR (nitrile butadiene rubber).



For more details see safety data sheet or contact us; contact@additek.net

After delivery, use and storage of our products not being under our control, we decline any express or implicit responsibility as to their behaviour.



MOULEX® PVA VERT

Peelable barrier coating

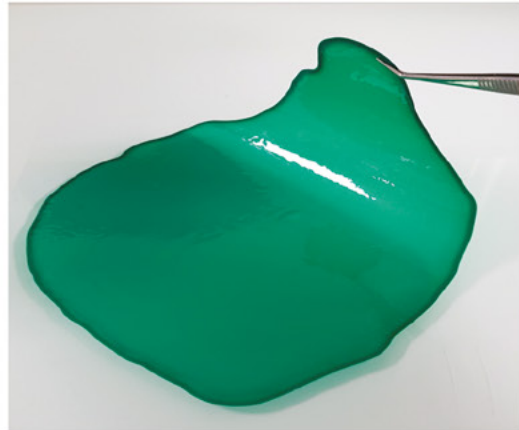
MOULEX® PVA VERT is a green liquid polyvinyl alcohol which forms a release barrier coating. This coating strongly files all types of porous materials like stone, wood, plaster, used moulds It is very suitable for models, prototypes, artistic solution

The coating is efficient only once and will be destroyed during piece release. The green film residue can be removed by peeling and washing with water.

Because of its water solubility, MOULEX® PVA VERT is not suitable for moulding plaster / plaster or aqueous resins

PROPERTIES

- Form: Liquid
- Colour: Green
- Density at 25°C: 0.99 – 1.02
- Viscosity at 25°C: 30 à 150 cSt
- Active ingredients: 100%
- Dry content: 7 ± 1%
- pH: 7
- Flash point > 100°C
- Freezing point: -0.3 °C



Frost resistant, stability & performances do not change after repeated freeze-thaw cycles.

○

Packaging:	25 kg can, 220 kg drum, 1000 kg IBC.
Shelf life	1 year



MOULEX[®] PVA VERT

Peelable barrier coating

GENERAL RECOMMENDATIONS FOR USE

1. Read attentively the safety data sheet
2. Shake or mix gently before using.
3. Spray or brush one cross layer.
4. Let dry until film forming.
5. Apply this way as many layers as necessary for your application.
6. Let dry as long as necessary between each layer: The previous layer shouldn't be completely dry and even a little bite tacky, to allow a good adhesion between each layer.
7. Leave the last layer to dry 1 night before applying resin or gelcoat....

Packaging: 25 kg can, 220 kg drum, 1000 kg IBC.

SAFETY RECOMMENDATIONS - PROTECTION

Precautions for safe handling and storage

Avoid contact with skin and eyes, inhalation of vapours and mists. Do not eat or drink while working. Keep away from food, drink and feed. Instructions as regards storage premises: Adequately ventilated premises.

Exposure controls /personal protection

Eye protection: eye glasses with side protection. Protection for hands: PVA (polyvinyl alcohol).



For more details see safety data sheet or contact us; contact@additek.net

After delivery, use and storage of our products not being under our control, we decline any express or implicit responsibility as to their behaviour.



www.additek.fr
contact@additek.net



ADDITEK SAS, Production plant ZI Route de Thennes, 80110 Moreuil, France, TVA n°
FR 58 418 609 400
Tel: + 33 (0)3 22 09 90 28 - Fax: + 33 (0)3 22 09 03 70